

Labette County Schools

GRIZZLY PEAKS NEWSLETTER

Formerly 'The Labetta'



WHAT'S INSIDE?

- Page 1 Covid-19 Update
9/11 Exhibit
- Page 2 Altamont Grade
School Updates
- Page 3 Bartlett Grade
School Updates
- Page 4 Edna Grade
School Updates
- Page 5 Meadow View Grade
School Updates
- Page 6 Mound Valley Grade
School Updates
- Page 7 Labette County High
School Updates
- Page 8 Upcoming Events
Alumni Spotlight

District Covid-19 Update

As many of you know, USD 506 is part of the KSDE Test to Stay and Learn Plan. The plan has been working wonderfully, and we are happy to be able to report low Covid-19 positivity numbers so far this school year.

If you would like to keep up with the latest district Covid positivity rates, we have created an online covid dashboard on the district website. It is located on the menu under Covid-19 Information.

Students Experience 9/11 Exhibit



Students recently had the opportunity to learn more about the September 11, 2001, attacks on the United States. Through an exhibit from the 9/11 Memorial & Museum, students were able to view a timeline of events that happened that fateful day. The exhibit was called September 11, 2001: The Day That Changed The World

GO Grizzlies!

Altamont Grade School



Spelling Bee Winners

- 1st- Jonathan Dusher
- 2nd- Rhyan Cochran
- 3rd- Zoey Davis

Jonathan and Rhyan will compete in the County Spelling Bee in Oswego on September 29th at 1:15pm.

Spelling Bee Participants by Grade



4th: Ollie Johnston, Case Capron, Kaelyn Bridgeman

5th: Jack Gilreath, Mallory Plumlee, Daniel Han

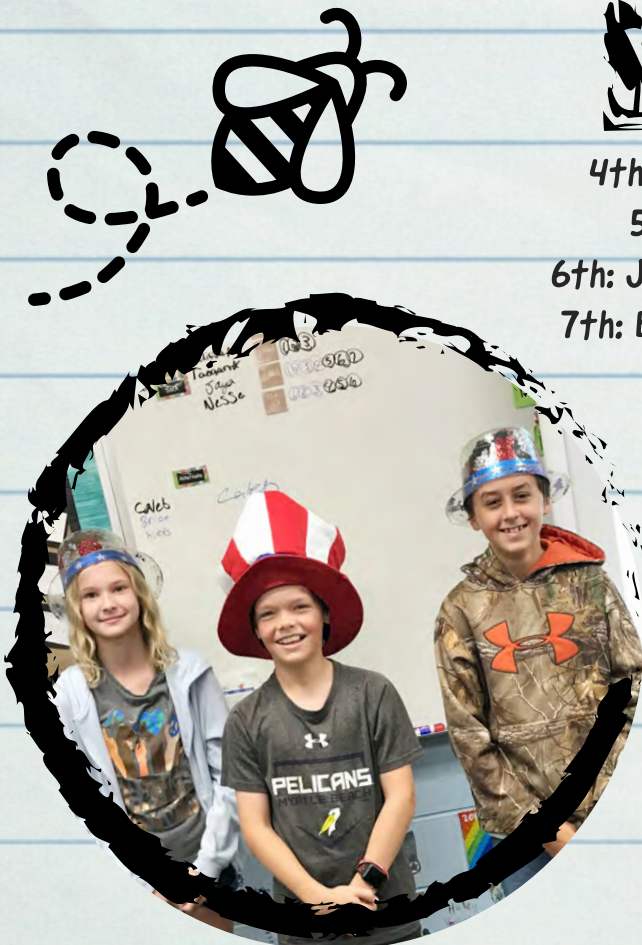
6th: Johnathan Dusher, Rhyan Cochran, Journey Lithicum

7th: Brantley Allen, Ginger Weathers, Hayden Wetherell

8th: Zoey Davis & Tylee Trollope

Constitution Day Celebration

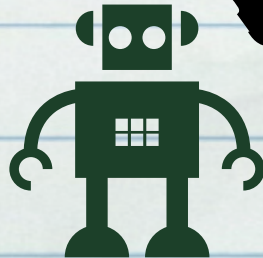
As the 7th grade celebrated Constitution Day, Luke, Brantly, and Mikaela (left) scored 70-80% on their constitution knowledge. Way to go!





Bartlett Grade School

Students at Bartlett recently experimented with Ozobots. Using different color markers, students would get the robots to do certain tasks by writing the correct color codes.



Spelling Bee Winners



Winner – Hadley Graves (Right)
Runner-up – Ben Ball (Left)



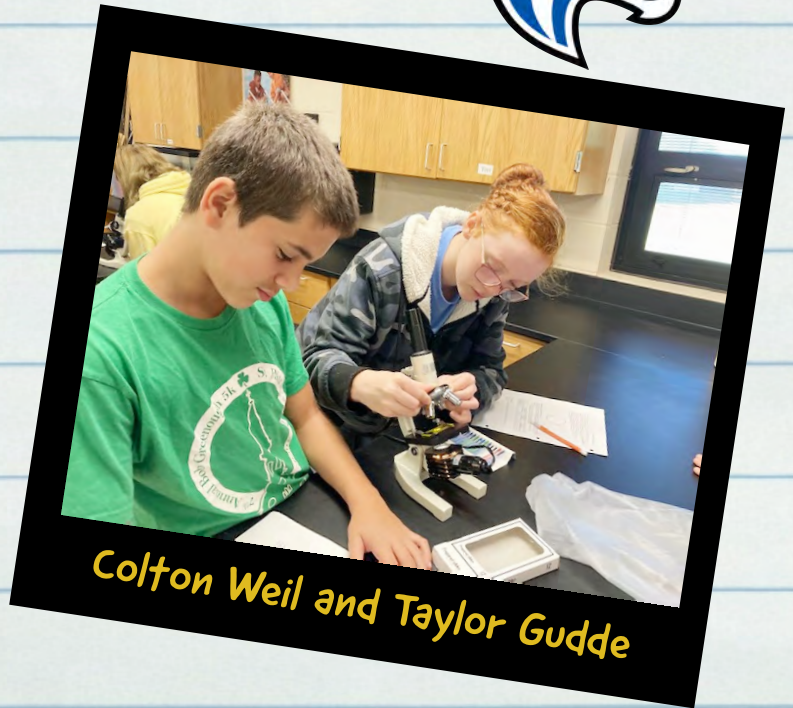
Congrats to all spelling bee participants!



Edna Grade School



Charley Wilson and Laynee Dufoe



Colton Weil and Taylor Gudde

EGS 7th graders are learning how to properly use a microscope and draw different magnifications of specimens.



8th Graders – Caitlyn Briggs, Sierra Hill, Carly Kirkwood, Amery Baker, and Taylor Rotert

Therese Foster's 6th, 7th, and 8th grade classes practiced lab safety with a card matching activity.



6th Grade – Ethan Severns, Owen O'Brien, Chloe Steelman, and Zane Garton

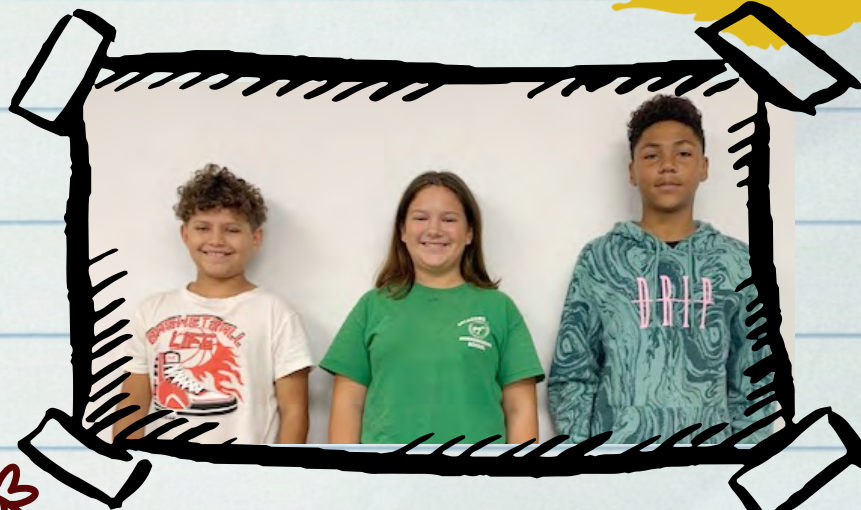


7th Grade – Thomas York, Haylon Steelman, Nolan Nash, Bailey Denman, and Terry Reeder

Meadow View Grade School



7th graders, Camden Good and Jaden Gieger, look at red onion cells under a microscope in Mrs. Sharp's class.



Meadow View Spelling Bee Finalists, l to r:
2nd Place- Traevyn Mathews-Shidler
1st Place- Perry Angleton
3rd Place- Deontae Fields
Perry will represent Meadow View at the County Spelling Bee in Oswego on September 29th, at 1:15pm.

~~~~~



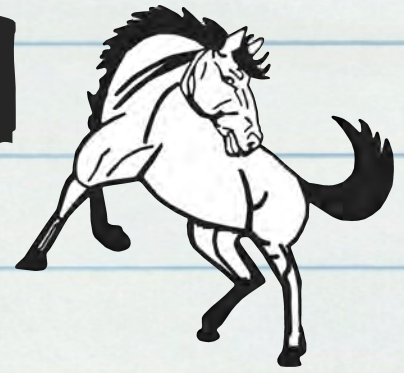
This week in Mrs. Kenkel's preschool class, students learned all about the letter A for apple. The students read both fiction and nonfiction books about apples, ate apple-themed snacks (including apple pie), made an apple tree craft, and incorporated the theme throughout our learning activities. What a fun way to begin learning our alphabet!



4th grade students took pictures of themselves to make individualized jack-o-lanterns. They also used creativity to make their own pumpkin, stem and leaf shapes.



# Mound Valley Grade School



Mound Valley 6th grade students are celebrating Constitution Day early with an IDL provided by Greenbush in our history class. We are learning about our Constitution.



Mound Valley third graders watched Henry/ Henrietta make a chrysalis and transform into a butterfly! This beautiful Black Swallowtail Butterfly was set free last week. Thank you so much Janet Phillips for sharing! We enjoyed taking care of and watching this amazing cycle of life!



# Labette County High School



## LCHS FFA Places 1st in Nursery Landscaping



In the Southeast Kansas District competition in Ft Scott, the Nursery Landscape A-team division boasted six placers and ended with a 1st place overall finish. The B-Team also placed 1st with six placers. Finally, the extra division team placed 1st with four placers.

During the competition, students identifying 50 nursery specimens, including samples of native trees, shrubs, grasses, ground covers and bulbs. Students also complete a 50-question exam and identify tools, insects and diseases of the nursery landscape industry.



### Nursery Landscaping Results

| A-Team              | B-Team                   | Extra Division     |
|---------------------|--------------------------|--------------------|
| 1st- Lakin Giager   | 1st- Ellie Gudde         | 2nd- Emily Balck   |
| 2nd- Alex Meister   | 2nd- Sydney Foster       | 5th- Jolee O'Brien |
| 3rd- Anna Dean      | 5th- Elizabeth Shoulders | 7th- Alexis Varner |
| 5th- Charli Alloway | 6th- Taylor Spencer      | 8th- Peyton Gibson |
| 6th- Tanner George  | 7th- Savannah Hinman     |                    |
| 8th- Shyanne Wiley  | 9th- Alyson Burnett      |                    |

## LCHS FFA Entomology team dominates

Labette County FFA members recently competed in the Southeast District Entomology Career Development Event. All three teams placed first. Students completed a 50 question identification test and a 50 question written test. The identification portion of the contest prepares students to identify the 72 most prolific and destructive pest species as well as the most beneficial species within state borders.

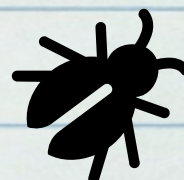
All insects presented are important to agriculture and may be presented in various life stages. The written exam covers integrated pest management strategies and cultural practices, pesticide formulations and toxicity ratings, chemical control measures and application recommendations, biological control, genetic modifications, as well as information specific to each species including metamorphosis and feeding habits.



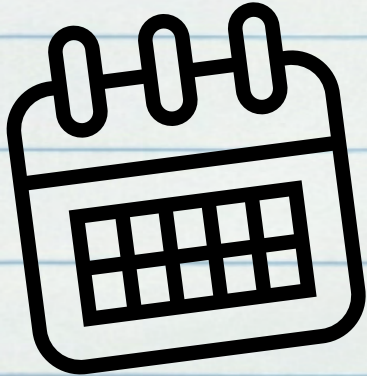
### Entomology Results

| A-Team                             | B-Team              | Extra Division       |
|------------------------------------|---------------------|----------------------|
| 1st- Lakin Giager                  | 1st- Macy Clevenger | 1st- Gracie Gatton   |
| 2nd- Elyse Clevenger               | 2nd- Morgan Hanigan | 2nd- Camden Farrow   |
| 5th- Noah Wiley and Madisyn Helwig | 3rd- Peyton Merrick | 3rd- Taylor Elsworth |
|                                    | 6th- Kaylee Dillow  | 4th- Ayvri Nash      |
|                                    | 7th- Alice Carnahan | 5th- Korri Dillow    |
|                                    | 8th- Raegan Roberts | 8th- Kade Curnutte   |

Photo L to R: Elyse Clevenger, Ayvri Nash, Gracie Gatton, Kaylee Dillow, Alyssa Barragar, Korri Dillow, Raegan Roberts, Macy Clevenger, Madisyn Helwig, Noah Wiley, Alice Carnahan, Camden Farrow, Lakin Giager, Morgan Hanigan, Peyton Merrick, Kade Curnutte, Taylor Elsworth, Kari Perkins.



# Labette County High School



## Upcoming Athletic Events



9/21

Girls Tennis @ Ft. Scott  
LC Gold VB @ Coffeyville

V/JV/Red Volleyball @ Ft. Scott

9/23

V/JV Cross Country @ Pomona Lake

JV Tennis @ Chanute

V Tennis @ Pittsburg

9/24

V Football vs. Wellington  
(HOMECOMING!)

9/25

Red/Gold VB @ Ft. Scott

Tennis @ Neodesha/Indy

Varsity VB @ Cherryvale

9/27

Golf @ Indy

JV Tennis @ Chanute

JV Football @ Wellington

Red/Gold VB @ Parsons

9/28

Golf @ Pitt

JV Tennis @ Neodesha

V Tennis @ Pittsburg

V/JV/F Volleyball Home

9/30

Cross Country @ Winfield

JV VB Home Quad

10/1

V Football vs. Ft. Scott

10/2

V Volleyball @ Chanute

V Tennis @ Parsons

## Alumni Spotlight

Emma Meier of Altamont is part of the University of Nebraska-Lincoln's 296-member Cornhusker Marching Band. Emma and her band mates perform at pregame and halftime of Nebraska's home football games. Emma is a sophomore forensic science major and plays the tuba. We're proud of you, Emma!

UNIVERSITY OF  
**Nebraska**  
Lincoln

